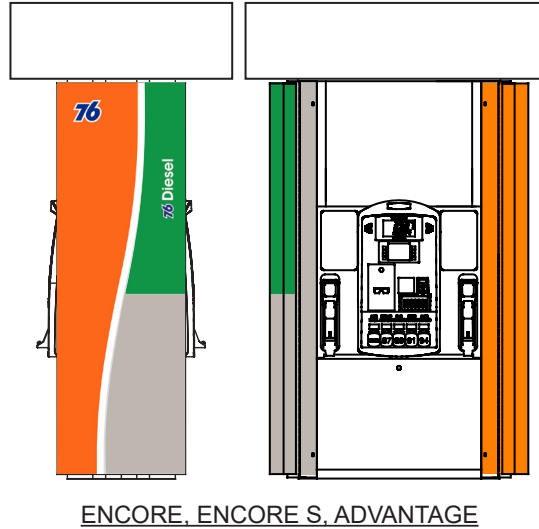


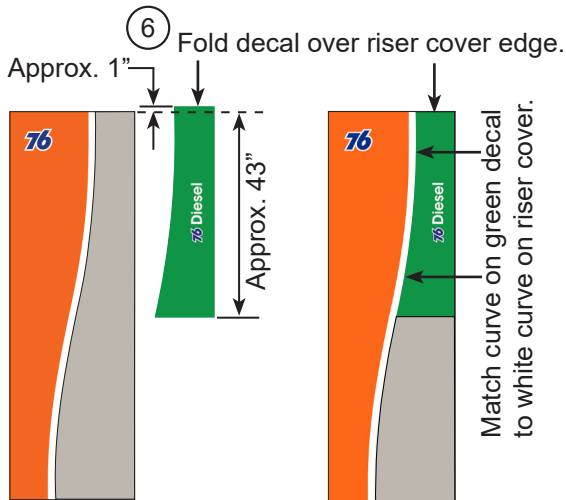
## 76 Wave Dispenser Riser Cover Decal Application Instructions



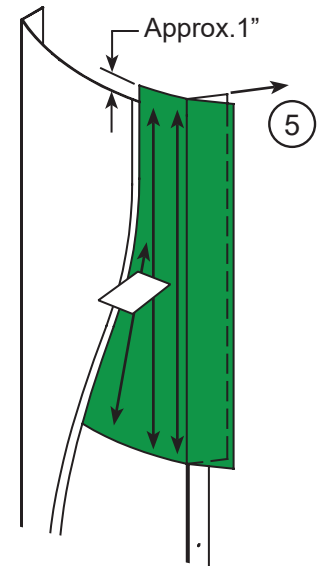
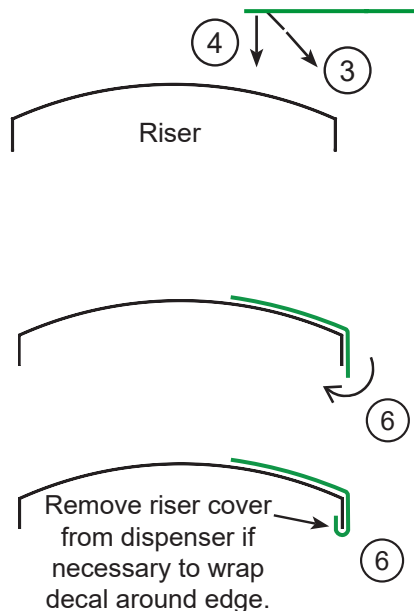
DECAL RISER COVER  
44.00X17.04 66RF,  
P76 WAVE DSL,  
PN 767665,  
ENCORE,  
ENCORE S,  
ADVANTAGE



DECAL RISER COVER  
44.00X17.04 66RF,  
P76 WAVE RENEW  
DSL, PN 767664,  
ENCORE,  
ENCORE S,  
ADVANTAGE



Position green decal on riser cover, matching curve on decal to curve on riser cover.



1. Clean any heavy grease with very small amount of degreaser or surface cleaner like Formula 409 applied to cloth. Do not use glass cleaner. Do not let cleaner get at edges of decals.
2. Clean riser cover surface with small amount of 50% solution of isopropyl alcohol (IPA) and water applied to cloth, wipe off with low lint cloth, let dry thoroughly.
3. Peel about 1" of backing from decal. Leave pre-mask on front for handling.
4. Position decal on riser cover and press edge onto riser cover surface.
5. Peel more of backing away and use stiff squeegee, hand pressure or cloth to apply decal to surface. Use back and forth motion as shown. Push bubbles out to edges. Can pop bubbles with pin to help release trapped air.
6. Wrap edge of decal around top edge and back edge of riser cover.



## 76 Wave Dispenser Riser Cover Decal Application Instructions



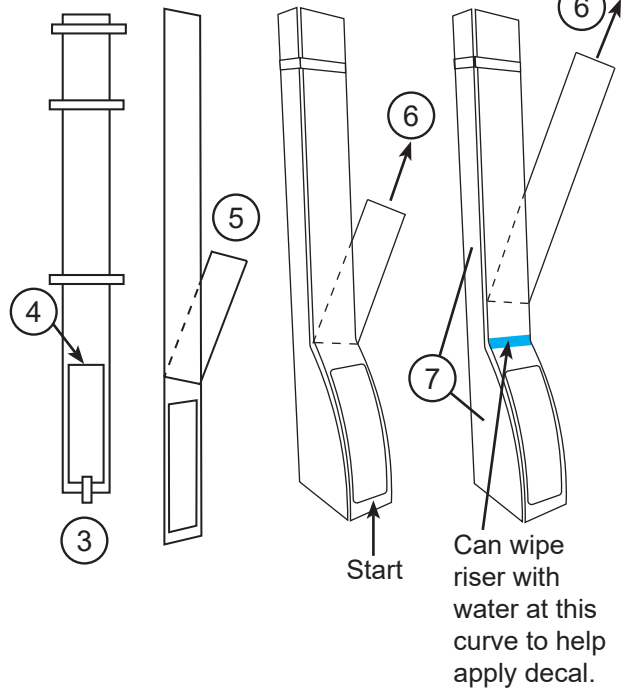
Ovation



DECAL RISER  
2 PC OVATION,  
P76 RENEWABLE  
DIESEL,  
PN 696946



DECAL RISER  
2 PC OVATION,  
P76 DIESEL,  
PN 800758



1. Clean any heavy grease with very small amount of degreaser or surface cleaner like Formula 409 applied to cloth. Do not use glass cleaner.
2. Clean riser surface with small amount of 50% solution of isopropyl alcohol (IPA) and water applied to cloth, wipe off with low lint cloth, let dry thoroughly.
3. Position front decal on dispenser riser as shown, taping at bottom and at other positions as shown.
4. Mark outline of pump handle receptacle. Remove decal and carefully cut outline of receptacle.
5. Peel backing from decal up to 1" or 2" above pump handle receptacle as shown. Leave premask on front of decal for better handling. Place front decal back on dispenser.
6. Pull more of backing off decal while applying pressure to adhere decal to dispenser riser. Use hand pressure, cloth, or stiff squeegee. Use back and forth motion. Push bubbles out to edges. Can pop bubbles with pin to help release trapped air.
7. After front decal is applied, apply side decal to dispenser riser.



Ovation 2



DECAL RISER  
42.75X6.36 OVAT 2,  
P76 RENEWABLE  
DIESEL, PN 696947



DECAL RISER  
42.75X6.36 OVAT 2,  
P76 DIESEL,  
PN 800759

Install Ovation 2 riser decal following similar (simpler) steps as described for Ovation above.

